

CHARMILL

RESIDENTIAL



Nottingham Place, Marylebone NW1

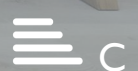
£1,615

A one double bedroom apartment arranged on the first floor of a charming period conversion on Nottingham Place. The property comprises a spacious reception/dining room with floor to ceiling windows and access onto a private balcony/terrace, separate fully fitted kitchen, principal bedroom with ample storage and a full bathroom suite. The apartment is located 0.5 miles from Marylebone's fabulous restaurants, boutiques and transport facilities and 0.2 miles Baker Street Underground station (Bakerloo Line).

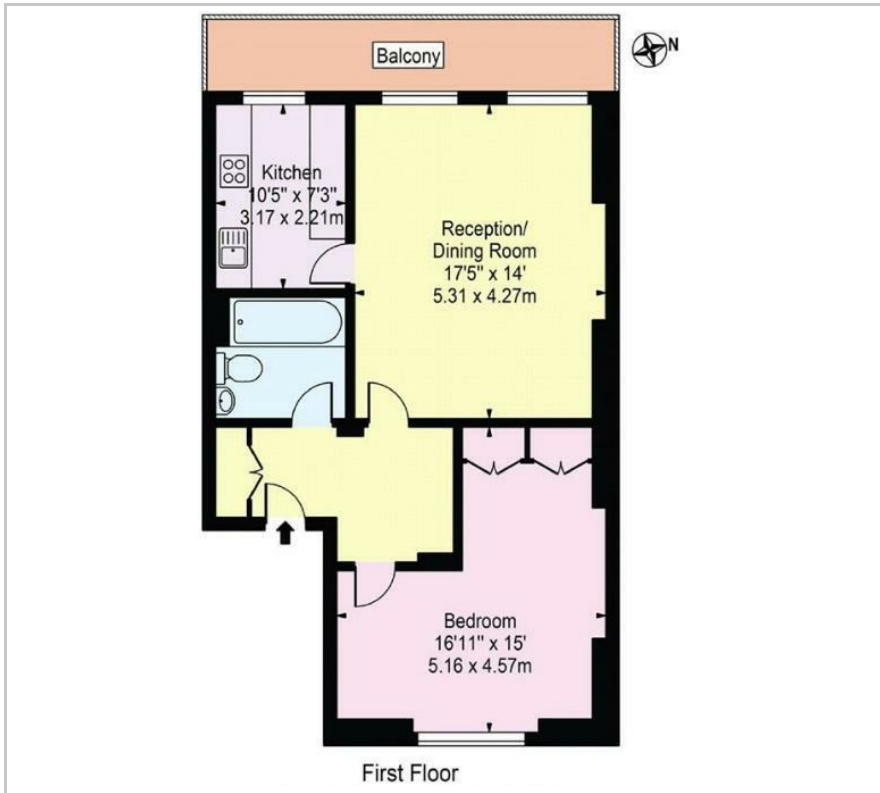
- One bedroom
- Furnished/Unfurnished
- First Floor
- Excellent location
- Wooden flooring

Viewing

Please contact us on 020 7046 6276 if you wish to arrange a viewing appointment for this property or require further information.



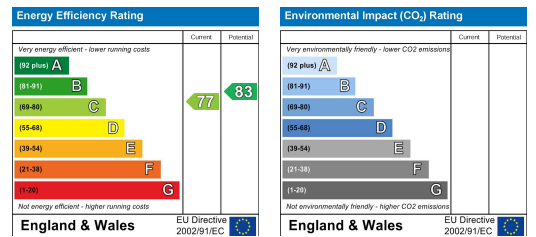
Floor Plan



Area Map



Energy Efficiency Graph



These particulars, whilst believed to be accurate are set out as a general outline only for guidance and do not constitute any part of an offer or contract. Intending purchasers should not rely on them as statements of representation of fact, but must satisfy themselves by inspection or otherwise as to their accuracy. No person in this firm's employment has the authority to make or give any representation or warranty in respect of the property.

020 7046 6276 • lettings@charmillresidential.co.uk • 51 Maida Vale, Little Venice, London W9 1SD
charmillresidential.co.uk